

A close-up photograph of a wooden horse head sculpture. The horse's head is made of dark wood and is facing right. It has a thick, light-colored rope halter around its neck. A metal bit is attached to the halter. The background is a dark wooden surface with vertical planks.

R WILD HORSE RANCH

NEWSLETTER





Board Meeting Schedule

Board Meetings are on the third Saturday of every month. Call the WHOA Office to see if the meetings are still scheduled for the above dates or have been rescheduled.

Board of Directors meeting agendas are posted 1 week before scheduled meeting in all common areas around the ranch for viewing.

Minutes and Agendas can also be found on the website. Please note: The minutes are password protected. Call the office to retrieve the password.

If you have any questions, or concerns, all open meetings start at 10:00AM at the Upper Lodge. All owners are welcome to attend.

Board Meeting Schedule is as follows:

October 15th, 2022

November 19th, 2022

December 17th, 2022

Board of Directors

President:	Brian Vargas
Vice President:	David Drake
Secretary/Treasurer:	Mary Halbasch
2nd Vice President:	Rodger Clifton
Director:	Charli Hand

Email your Board of Directors: rwhrdirectors@rwildhorseranch.net

A few words from an ol
COWBOY

"R Ranch is our safe place, where our kids can be kids. We can forget our phone on the table and it is more than likely going to be turned into security. Please help us continue to keep R Ranch safe for future generations. The influence of the outside world is creeping in and we need a little help preserving what we love about the R Wild Horse Ranch. - Frank Clifton Ranch Manager"





R RANCH DIRECTORY

Website: www.rwildhorseranch.net
Facebook: <https://www.facebook.com/RWHRanch>
Weather Station: <https://tempestwx.com/station/52324>
Instagram: <https://www.instagram.com/rwildhorseranch>
Contact us: ranchwild@rwildhorseranch.net

You can now reach all departments by calling the main Ranch phone number
530.567.7007

Security		24/7 365 Days a year
General Store	7 DAYS A WEEK	8AM-5PM
Snack Bar	Friday: Saturday: Sunday:	3PM-8PM 11AM-6PM 11AM-3PM
Stables	Closed Wednesdays Petting Zoo	8AM-3PM Open until Dusk
WHOA Office	530-567-7007 Tuesday-Saturday <i>**if after hours, leave a message & we will get back to you.</i>	8AM-4PM
Rec. Center		8AM-12AM <i>**To access Rec. Center store after hours contact security via the callbox.</i>
Swimming Pool		9AM-10PM
Hot Tub	Must be 16 & older	9AM-Midnight
Ranch Manager	Frank Clifton fclifton@rwildhorseranch.net	

***Hours are subject to change given unforeseeable circumstances such as wildfires, power outages etc.*



NEWSLETTER

FROM THE HORSES MOUTH



DECORATE YOUR CAMPSITE!

After you finish up at the stables, head on over to your campsite & get to decorating! Prizes will be awarded for scariest campsite and much more!



Whats new at the R Wild



Horse Ranch?



HALLOWEEN IS UPON US

Join us Saturday October 29th, 2022 at The Stables under the covered arena. We will start at 9:00AM dressing up the horses in their favorite costume & parading around the arena. At approximately 10:30AM we will have a costume contest! Ribbons will be awarded to best dressed! At 11:00AM join us for Pumpkin Carving and Decorating followed by a complimentary lunch!



TRICK OR TREAT!

Once your campsite is decorated, get ready for trick or treaters! PLEASE NOTE: If you are planning on passing out candy, We ask that you place a lit jack-o-lantern by the roadside of your campsite so that our fellow ghouls and goblins know its okay to come knockin'!

ATTN TRICK OR TREATERS!

Meet us at the Recreation Center at 5:30PM to kick off Trick or Treating with smashing pinatas! Trick or Treating will follow shortly after! Make sure to stop by the Steadman's campsite for a spooky haunted house!

THINGS TO NOTE:

To reserve a horse to dress up please contact the stables! There is a limited number of horses available.

If you would like to participate in pumpkin carving, be sure to bring your own pumpkins. The ranch will have some smaller pumpkins available. Hope to see you all for a SPOOOOOOY GOOD TIME!

PLM HUNT

Private Land Wildlife Habitat Enhancement & Management Area Information And Rules

All winner of the R- Wild Horse Ranch PLM late season deer hunt to be held November 15,16,17 and 18, 2022 must be an owner in good standing (assessments must be current) of the R- Wild Horse Ranch at the time of the hunt.

The "B" zone deer tag must be exchanged for the PLM tags. This is a requirement of the Department of Fish and Game so that no hunter can harvest more than (2) deer in the State of California.

All PLM tag winners will be allowed one (1) person to accompany them on their hunt to help them spot game and retrieve harvested animals. The accompanying person is **NOT** allowed to carry or possess a firearm while in the PLM hunting area.

PLM winners and their companions with ATV's, 4X4's, and all other vehicles must stay on the roads.

Property boundaries will be marked by fences, blue paint markings, blue ribbon or signage. Maps will be available to tag winners.

Recipients of the PLM deer tag will also be able to hunt bear and wild pig, provided they have valid bear and pig tags.

This deer hunt is a (3) point or better hunt; meaning the deer must have atleast three (3) points on (1) side **NOT INCLUDING EYE GUARD-BROW TINE**. Bear and Pig must be hunted according to the State of California Fish and Game Regulations and laws.

All animals harvested **MUST** be brought to the main gate for validation and record keeping for the PLM Program. This is a requirement of the Department of Fish and Game. Also, this is an opportunity for photos for the R- Wild Horse Ranch Newsletter to help promote next years PLM Hunt.

There will be an orientation dinner at 6:00PM on November 14,2022 at the Upper Lodge of the R Wild Horse Ranch for tag winners and the person accompanying them.

All proceeds will go towards future PLM Projects and Maintenance.

Anyone caught in violation of the PLM rules or Fish and Game laws will forfeit their tag and be asked to leave. The Department of Fish and Game will also be notified.

R-WILD HORSE RANCH

2023 PLM HUNT TICKETS ON SALE NOW!



\$100.00 Adults (Only 100 tickets available)

\$50.00 Junior (Only 50 tickets available)

The more you buy, the better your odds!

Drawing will be held on the weekend of July 4, 2023

Hunt will be November 14,15,16, & 17 2023

Please call WHOA for details (530) 567-7007

NOVEMBER NEWSLETTER

STABLES VETERANS DAY RIDE

NOVEMBER 12, 2022
9:00AM

JOIN US FOR A RELAXING RIDE THROUGH THE MOUNTAINS!
VETERANS RIDE FOR FREE! VETERANS DAY RIDE IS \$20.00 PER
PERSON FOR ALL NON-VETERANS. PAY AT THE OFFICE & CALL THE
STABLES TO RESERVE YOUR HORSE.

VETERANS DAY

THE REC CENTER WOULD LIKE TO HONOR OF ALL OF OUR VETERANS.
IF YOU HAVE A PHOTO OF SOMEONE CLOSE TO YOU THAT HAS
SERVED AND PROTECTED OUR COUNTRY & WOULD LIKE TO SHARE,
BRING A PHOTO TO THE REC CENTER & WE WILL POST IT ON OUR
VETERANS HALL OF FAME. PLEASE BE SURE TO INCLUDE NAME AND
TITLE HELD AND/OR WHICH U.S. ARMED FORCES

PLM HUNT

NOVEMBER 15TH-18TH

**PLEASE NOTE: HORSE TRAILS WILL BE
CLOSED NOVEMBER 14-17TH FOR PLM HUNT**

THANKSGIVING POTLUCK DINNER NOVEMBER 24TH 2022

Join us for a

THANKS GIVING

Potluck Dinner



November 24th, 2022

AT THE REC. CENTER

DINNER STARTS AT 3:00PM

THE RANCH WILL PROVIDE THE TURKEY

**WE ASK THAT THOSE ATTENDING BRING A SIDE
DISH**

MORE DETAILS TO FOLLOW



R WILD HORSE RANCH

ATV CLUB

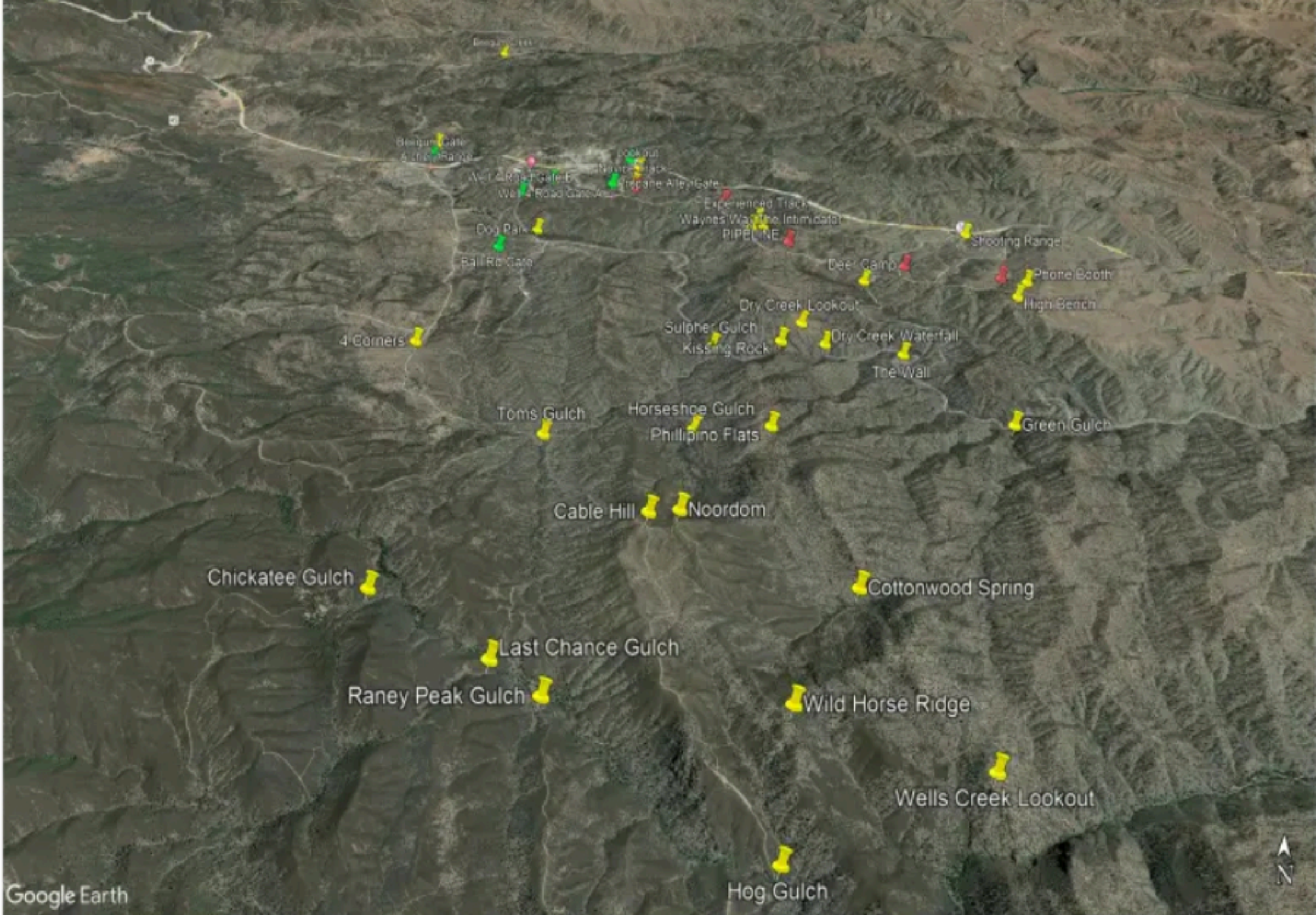
OCTOBER 1ST | NOVEMBER 5TH | DECEMBER 3RD

**WANT LEARN THE TRAILS?
MEET NEW FRIENDS TO RIDE WITH!**

EVERY FIRST SATURDAY OF THE MONTH

MEET 10:00AM AT THE RECREATION CENTER

Join us every first Saturday of the month for our ATV Club Ride. All Owners and guests of Owners welcome! No group too large or too small. Our group rides are a great way to learn how to navigate the trails or if your a beginner - get comfortable riding!



Map labels include: 4 Corners, Toms Gulch, Cable Hill, Chickatee Gulch, Last Chance Gulch, Raney Peak Gulch, Hog Gulch, Sulpher Gulch, Kissing Rock, Horseshoe Gulch, Phillipino Flats, Dry Creek Lookout, Dry Creek Waterfall, The Wall, Green Gulch, Cottonwood Spring, Wild Horse Ridge, Wells Creek Lookout, Dog Park, Ball Run Gate, 4 Corners Range, Well Run Gate, West Road Gate, Lookout, Navajo Stack, Strepone Alley Gate, Experienced Track, Waynes Way, No Intimidator PIPELINE, Deer Camp, Shooting Range, Phone Booth, High Bench, and Noordom.

PLEASE NOTE: NOT ALL OF THESE COORDINATES ARE OWNED BY THE R WILD HORSE RANCH. THIS MAP IS FOR EDUCATIONAL PURPOSES SO THAT OWNERS KNOW THEIR SURROUNDINGS IN THE EVENT THAT EMERGENCY ASSISTANCE IS NEEDED.

Landmark	N	W
Beegum Creek	40°21'07.42"	122°48'42.01"
Archery Range	40°19'19.87"	122°48'50.97"
Beegum Gate	40°19'10.57"	122°48'50.80"
C120 Gate	40°19'09.63"	122°47'21.90"
Lookout	40°18'57.93"	122°47'16.95"
Novice Track	40°18'49.68"	122°47'18.33"
Well 4 Rd Gate A	40°18'49.54"	122°47'53.89"
Well 4 Rd Gate B	40°18'41.42"	122°48'05.37"
Propane Alley Gate	40°18'47.65"	122°47'27.53"
Dog Park	40°18'18.03"	122°47'54.78"
Ball Rd Gate	40°18'05.47"	122°48'07.94
Experienced Track	40°18'24.87"	122°46'26.68"
The Intimidator	40°18'16.75"	122°46'29.23"
Waynes Way	40°18'18.08"	122°46'24.47"
Shooting Range	40°18'22.71"	122°45'03.17"
Phone Booth	40°17'47.78"	122°44'48.86"
High Bench	40°17'38.86"	122°44'54.69"
Deer Camp	40°17'49.59"	122°45'48.19"
Dry Creek Lookout	40°17'23.95"	122°46'13.26"
4 Corners	40°17'07.98"	122°48'24.08"
Sulpher Gulch	40°17'15.05"	122°46'43.99"
Kissing Rock	40°17'09.42"	122°46'21.36"
Dry Creek Waterfall	40°17'18.80"	122°46'05.25"
The Wall	40°17'15.43"	122°45'38.89"
Toms Gulch	40°16'31.78"	122°47'35.08"
Horseshoe Gulch	40°16'35.10"	122°46'49.60"
Phillipno Flats	40°16'32.56"	122°46'26.23"
Green Gulch	40°16'45.24"	122°45'08.72
Cable Hill	40°15'54.63"	122°47'00.53
Noordom	40°15'54.23"	122°46'52.07"
Cottonwood Spring	40°15'41.49"	122°46'05.99"
Chickatee Gulch	40°15'35.93"	122°48'10.39"
Last Chance Gulch	40°15'19.53"	122°47'36.00"
Raney Peak Gulch	40°15'12.27"	122°47'22.74"
Wild Horse Ridge	40°15'07.27"	122°46'25.21"
Wells Creek Lookout	40°14'57.22"	122°45'42.31"
Hog Gulch	40°14'41.94"	122°46'28.87"

KNOW OHV HAND SIGNALS



STOP



SLOW DOWN



LEFT TURN



RIGHT TURN



HAZARD LEFT



HAZARD RIGHT



HAZARD ONCOMING

IT COULD SAVE A LIFE!



Q: Have you ever wondered why riders coming toward you are holding up their hands with fingers showing a number?

A: The number of fingers equals the number of riders in their group behind them.

Next time you see oncoming traffic, give them a heads up!



5 MORE



4 MORE



3 MORE



2 MORE



1 MORE



NO MORE RIDERS

A WORD FROM



SECURITY

Dear Owners,

Just a friendly reminder to all, please check in/out upon arrival AND departure OF ALL sites including Storage Yard sites. Security has been hard at work getting the storage yard organized. We now have a Drop Box at the gate and over 100 numbered spots available to use.

Please continue to shut and lock all gates behind you after you pass through them. This is very important as it helps keep our ranch safe and secure. We appreciate all of your cooperation in this matter?***

Make sure your owner numbers are on ALL of your trailers and off road vehicles. We will no longer give warnings to owners or guests that do not have owner numbers on their equipment.

Remember, there is NO driving off road in the developed areas also known as, "compound" on the ranch. If you want to go off road please do so in the appropriate areas. Lets keep our ranch looking as beautiful as possible!

We have been fighting an ongoing battle with bears. Please keep all ice chests and food items inside over night so the bears do not get to pudgy. >>>fat?

Lastly, we have handicapped parking available at the Upper Lodge. Please make sure to keep handicapped parking accessible. You may park at the Upper Lodge to load and unload your belongings but we must keep it clear for those in need as well as in the event of an emergency i.e. medical or wildfires, etc.

As always, speed limit is 10MPH

-Thank You

JJ Rose & the rest of your Security Department.



BINGO NIGHT

**EVERY FRIDAY
at The Rec Center**

BINGO card sales
START at 7:00PM

**Bingo starts
@ 7:30PM**

**10 PERSON
MINIMUM!!**

FUN FOR ALL!



KARAOKE *Night*

AVAILABLE EVERY
SATURDAY
7PM-10PM

REC CENTER



R WILD HORSE RANCH
SNACKBAR

SOUP SEASON IS UPON US!

**STAY TUNED FOR NEW SOUPS
AND SANWICHES AND OTHER
SPECIALS COMING SOON!**




STABLES NEWS


THE WEATHER IS PERFECT FOR A TRAIL RIDE!
BOOK YOUR TRAIL RIDE TODAY!

**WANT TO BECOME AN
EXPERIENCED RIDER?**

COME DOWN TO STABLES AND EARN YOUR TRAIL CARD. TRAIL CARDS ARE FREE FOR OWNERS. YOUR TRAIL CARD ALLOWS YOU TO GO OUT ON THE HORSE TRAILS BY YOURSELF DURING STABLE HOURS. LESSONS ARE ALSO AVAILABLE EVERY SATURDAY FROM 9AM-12PM. APPOINTMENT SUGGESTED BUT NOT REQUIRED



Hay Bully, what are you going to do with all your vacation time?



I heard the grass is always greener out in C area. Hopefully the neigh-bors remember how much i love my carrots!

NOT TRYING TO PUT IT
PAST'URE,
SOME OF OUR HORSES
ARE GOING ON
VACATION AS OF
NOVEMBER 1ST!



DECEMBER NEWSLETTER

December 3rd, 2022

9:00AM-2:00PM

Head down to the Stables to take a
christmas picture with your favorite horse!



Rec. Center

Craft every saturday at 2:00PM



FOR YOUR A-MOOOO'S-MENT

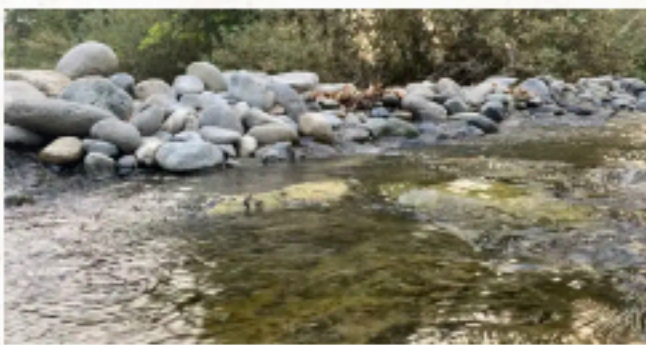


Bully the Steer would like to say a few words: "While I don't travel far, as I've retired from trekking through these mountains, Beegum Creek is one of my favorite places to visit! Sometimes you will even see some of my friends down there! If you do see my friends, tell them Bully says Haaaay!"

Bully is at The Stables, he especially loves carrots and affection from all his fans! Last we spoke to Bully, he was working on making his Instagram Debut!

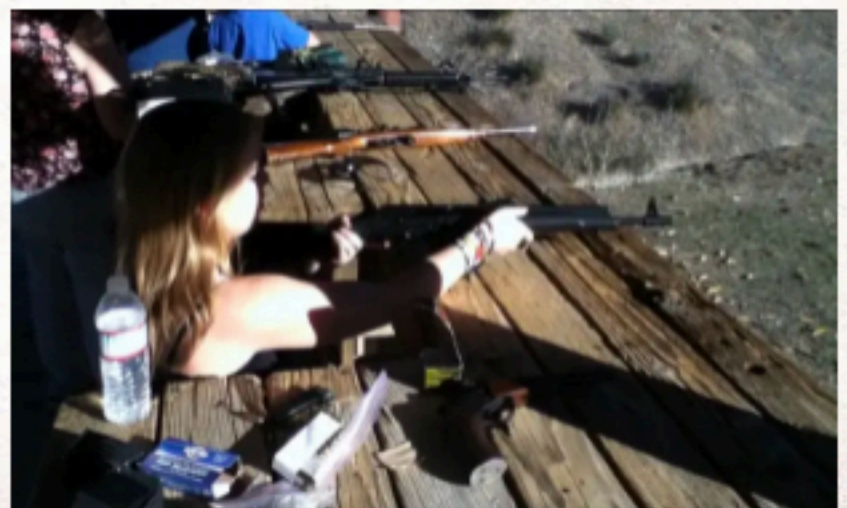
Beegum Creek

Have you been down to the creek? Whether you just like to go for a ride, hang out by the water or go fishing, Beegum Creek is the place to be! Beegum Creek runs 2 miles through The R Wild Horse Ranch. There is plenty of wild blackberries to forage and sometimes you will even find wild grapes growing! Per California State Laws, there is no riding motorized vehicles through the creek, as it pollutes our waterways. Beegum has been very clean lately! Thank you to everyone doing their part in keeping one of our favorite places here on the ranch clean of trash and debris! Also, keep in mind there is no shooting down at Beegum please visit the Shooting Range for that.



Shooting Range

With it being hunting season, the Shooting Range is a great place to sight-in your rifles! The Shooting Range is located along HWY 36 or you can take the trail deemed, "The Roller Coaster" to get there! The Shooting Range is a great place to teach your little ones how to shoot! It is also a great place to stop before you head into the XXX acre Hunting Area!



More fun at R Wild Horse Ranch

Archery

Our Archery Range is out there on the way to Beegum Creek. Bow season started September 17th. The Archery Range is a great place to get some target practice! If you would like to take up archery but dont have your own equipment, dont worry! The Rec. Center has plenty of bows, arrows & targets available for you to use. All you need is your Owner ID Card. Contact Security to take out any of our equipment.



Tom Sawyer Pond

Our man-made pond is a great place for the family to go fishing! The pond is stocked with Rainbow Trout every year. We only have one rule! Tom Sawyer Pond is not a catch and release pond. Any fish caught, you must keep. We also have a fish cleaning station located right along the pond so that you can get your filets ready for the BBQ! You can find plenty of wildlife enjoying the pond including hawks, deer, native water fowl.



General Store



We are happy to announce that the General Store is now open 7 days a week! I would like to thank everyone for their continued support over the years!

Dont forget to check out our wide selection of "Ranch Swag" as it changes with the seasons.

-Lori Atko
General Store Manager



R WILD HORSE RANCH

WORD SEARCH



A	O	D	O	D	O	G	P	A	R	K	A	R	D
G	U	G	A	D	T	E	D	Y	T	N	O	M	A
G	T	N	A	S	A	D	D	L	E	M	Y	T	N
L	B	C	I	L	A	S	T	C	H	A	N	C	E
W	A	H	E	E	Y	C	D	S	R	A	N	C	H
G	C	H	C	K	D	D	R	Y	C	R	E	E	K
L	K	G	E	K	I	B	T	R	I	D	E	R	S
I	G	K	T	R	K	E	N	I	C	H	A	T	V
D	Y	K	W	H	C	L	U	G	S	G	O	H	O
E	K	I	S	S	I	N	G	R	O	C	K	A	Y
R	L	Y	Y	O	B	W	O	C	H	O	W	D	Y
D	V	A	B	S	R	U	P	S	Y	T	S	U	R
R	A	D	Y	G	S	L	R	I	G	W	O	C	K
B	E	E	G	U	M	H	O	R	S	E	N	A	S

RANCH
MONTY
LAST CHANCE
KISSING ROCK
R WILD
SADDLE
HORSE
DRY CREEK
YEEHAW
HOGS GULCH
RUSTY
DIRTBIKE
COWGIRL
DOG PARK
COWBOY
ATV
SPURS
HOWDY
GLIDER
BEEGUM
OUTBACK



R WILD HORSE RANCH
PLATINA, CA



@rwildhorseranch

www.rwildhorseranch.com